

1	2	3	4	
RevNo	Revision note	Date	Signature	Checked

To fit a set of Cagiva Mito/Planet wheels to your TDR, you will need (as well as the wheels), the following:


- ~ Mito speedo drive (works fine with TDR speedo and cable)
- ~ Front LHS spacer
- ~ Front RHS spacer
- ~ Either a disc spacer, or spacers for the caliper.
- ~ The Mito disc is dimensionally exactly the same as the TDR disc

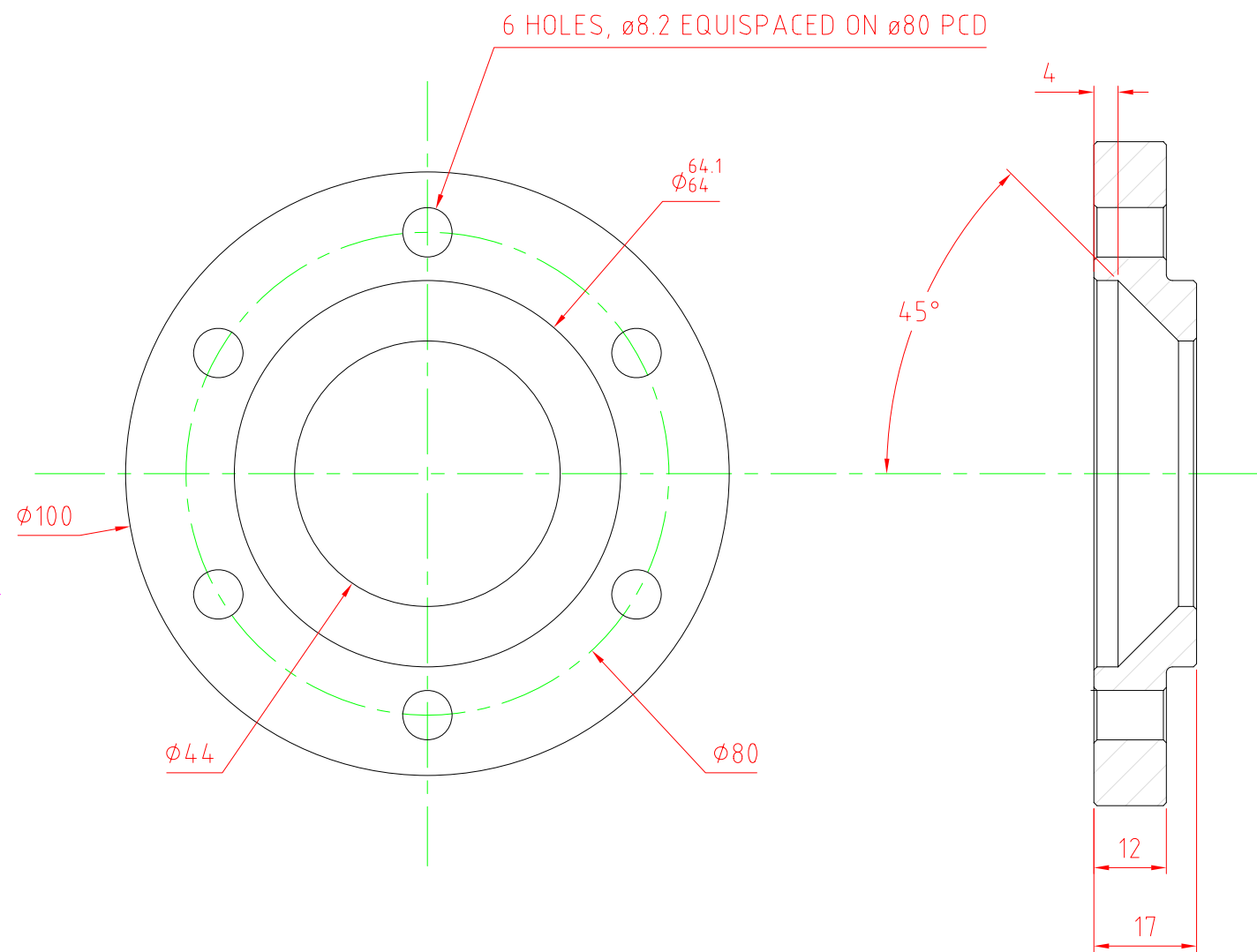
- ~ Mito cush drive rubbers and sprocket carrier
- ~ Mito rear disc
- ~ Mito rear caliper and bracket (needs modifying to locate on the TDR swingarm)
- ~ Mito rear sprocket (Renthal do them)
- ~ Rear LHS spacer
- ~ Rear RHS spacer

The spacers/adapters shown in this document work with a set of the later 6 spoke wheels in my TDR. I assume that they will work with the earlier 3 spokes, but no guarantee.

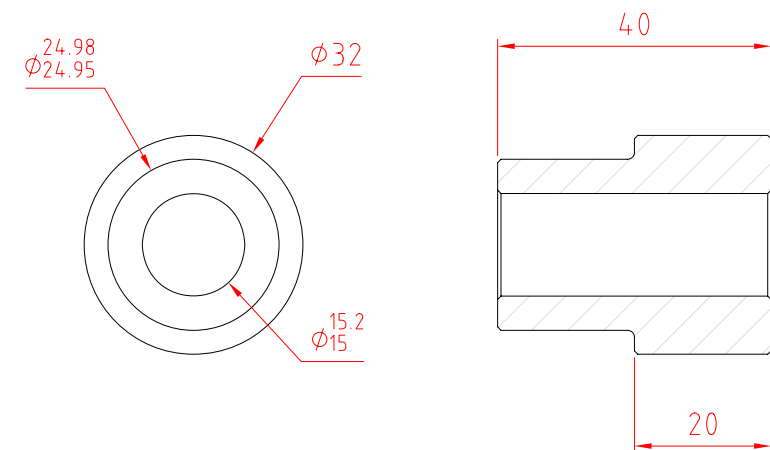
You may wish to experiment with gearing due to the lower profile tyre on the rear. Additionally, you may wish to use a differnt front mudguard, or consider lowering the standard one, rather than have a slightly unsightly gap between the mudguard and wheel.

If, for some reason, you find any errors in these drawings, or variations in different year Cagiva wheels, please let me know @ tdr250@gmail.com.

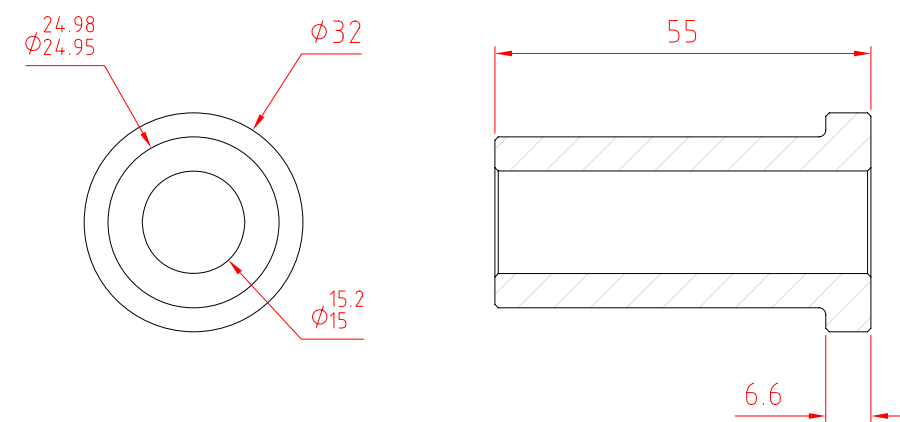
Itemref	Quantity	Title/Name, designation, material, dimension etc			Article No./Reference		
Designed by Paul Norris		Checked by ~	Approved by - date ~	File name ~	Date 8 Nov '06	Scale ~	
				Notes			
				Mito/Planet Wheels In TDR250		Edition 0	Sheet 3/3



FRONT DISK MOUNT

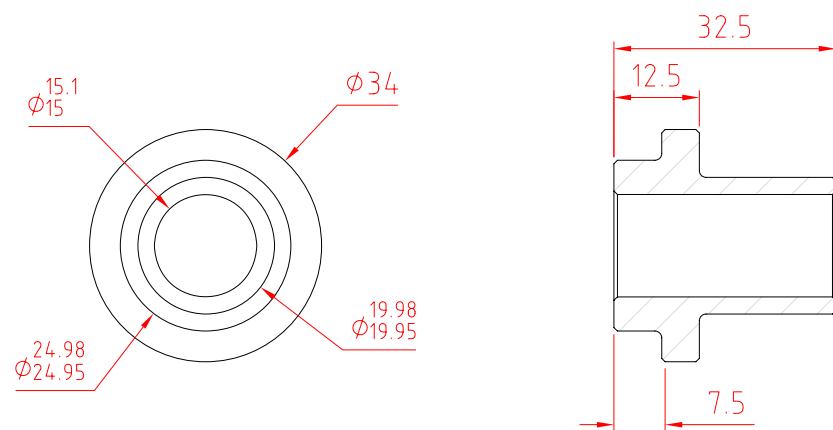


FRONT WHEEL RH SPACER

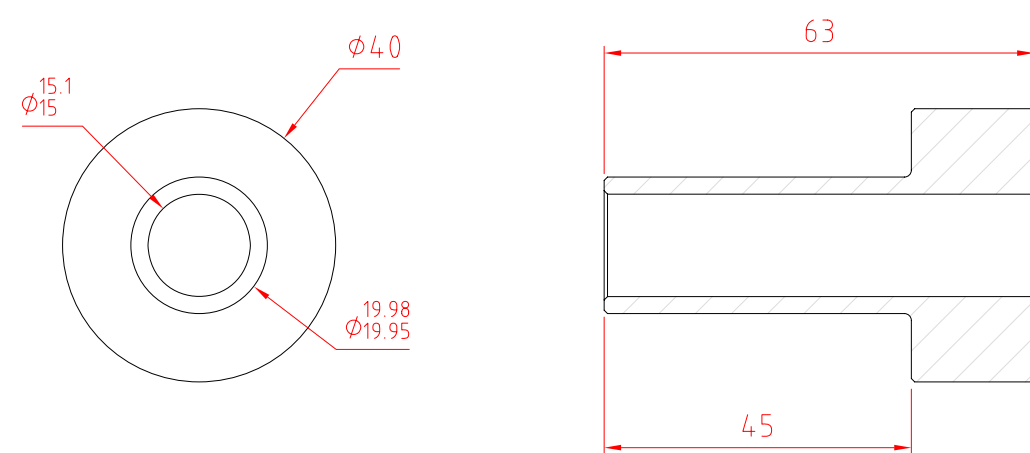


FRONT WHEEL LH SPACER

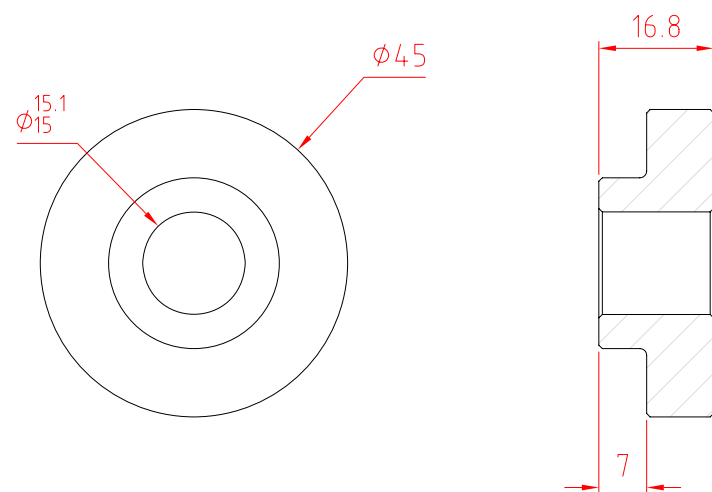
Itemref	Quantity	Title/Name, designation, material, dimension etc			Article No./Reference	
Designed by Paul Norris	Checked by ~	Approved by - date ~	File name ~	Date 8 Nov '06	Scale ~	
			Front Wheel Spacers			
			Mito/Planet Wheels In TDR250	Edition 0	Sheet 2/3	



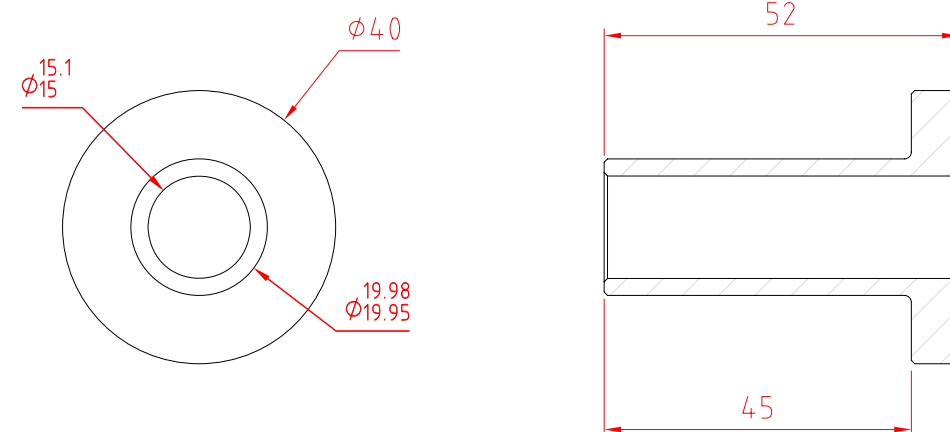
SPROCKET CARRIER INNER SPACER




REAR WHEEL RHS SPACER [TDR SWINGARM]



SPROCKET CARRIER OUTER SPACER



REAR WHEEL RHS SPACER [TZR 2MA SWINGARM]

Itemref	Quantity	Title/Name, designation, material, dimension etc			Article No./Reference	
Designed by Paul Norris		Checked by ~	Approved by - date ~	File name ~	Date 8 Nov '06	Scale ~
			Rear Wheel Spacers			
			Mito/Planet Wheels In TDR250		Edition 0	Sheet 1/3